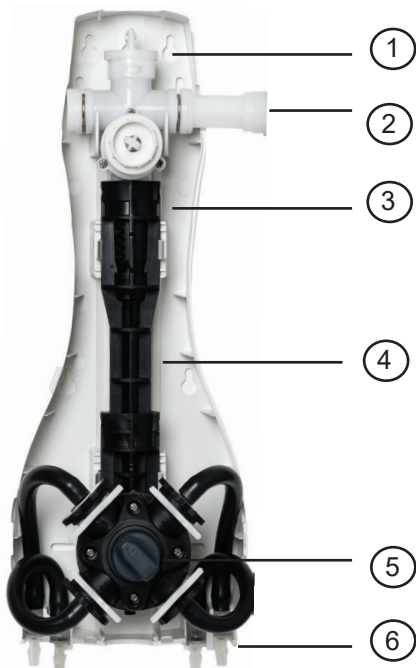


ECOMULTI STANDARD  
4 Chemical Dispenser

Product Datasheet



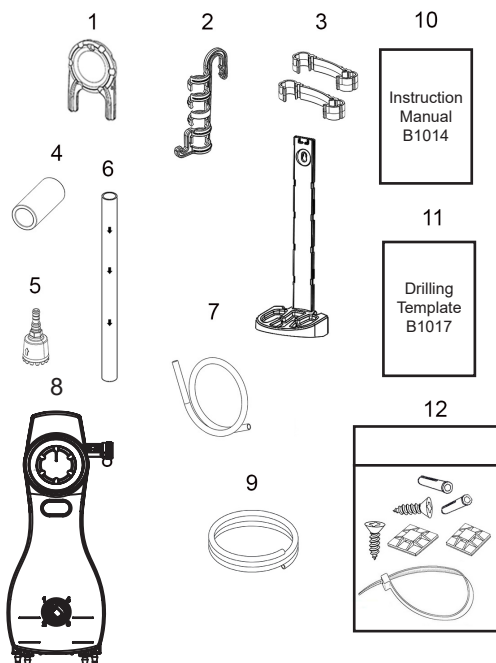
**ECOMULTI** is a venturi system that can dilute up to 4 chemicals from one dispenser. The proportioner is available for high flow (14L/min) and low flow (4L/min) applications and ideal for use with spray bottles, buckets and scrubber dryers. The proportioner has been designed in accordance with European Standard EN 1717 and is fitted with a Type DB backflow preventer.

**Accessories available:**  
Bottle bracket, hanging bracket, chemical cabinets

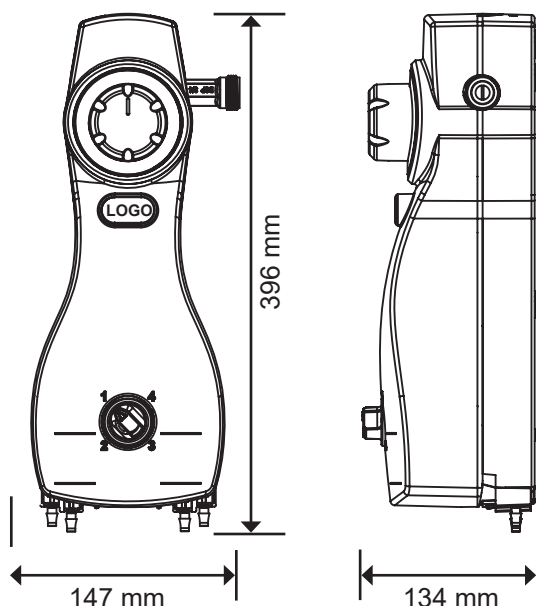
**Approvals:**  
WRAS: 1311065  
WaterMark: Licence No. WMK25899. Specification: ATS5200.101 - 2005

Dimensions (approx) (mm)	H 396 x W 147 x D 134
Weight (approx)	1 kg
Branding (mm)	Centre branding plaque: H 15 x W 40 Multi-lingual, colour-coded chemical pictograms
Installation	Working temperature range 4 – 65° C Working pressure range 2 – 5 bar Minimum water flow required: High flow = 8.5L/min Low flow = 3.5L/min
Dilution	13 independent dilution ratios High Flow 6:1 - 350:1 Low Flow 2:1 - 128:1
Material	Cover/Backplate/Dial Selector: Glass Bead Polypropylene (GBPP) Proportioner Pusher: ABS Internal tubing and seals: EPDM

1	Easier installation: Built-in spirit level and multitude of drilling holes
2	Water inlet direction can be changed. 3/4" BSP or NPT male inlet connection
3	Available in high flow and low flow versions with BrightGap or AirGap
4	Type DB backflow preventer
5	4 Product Dial Selector to select chemical. Chemical is delivered via patented dilution pin that eliminates the need for metering tips and allows for selection of up to 13 dilution ratios per chemical.
6	Chemical can be delivered from side chemical cabinets or from chemical containers installed at the bottom of the unit



In the Box	
1	Dispenser key
2	Bucket hook (high flow version)
3	Bottle bracket and clips (flow flow version)
4	Ceramic weights
5	Foot filters
6	BrightGap low flow outlet tube with flood ring
7	BrightGap high flow 1.5m outlet tube with flood ring
8	ECOMULTI Standard unit
9	Clear PVC chemical suction tube
10	Instruction manual and chemical pictograms
11	Drilling Template
12	Screw Pack



Shipping Info			
Shipping Method	Quantity of units	Dimensions L x W x H (cm)	Net Packed Weight (kg)
Box	1	52 x 24 x 17	2.4
Carton	6	65 x 54 x 52	14
Pallet	54	120 x 100 x 117	150
Euro Pallet	42	120 x 80 x 117	120

Part Number	Description
DX4H-WK	ECOMULTI Standard High Flow x 4 White Cover Grey Ring Bright Gap
DX4L-WK	ECOMULTI Standard Low Flow x 4 White Cover Grey Ring Bright Gap