

ECOMULTI COMPACT
5 Chemical Dispenser

Product Datasheet

ECOMULTI is a venturi system that can dilute up to 5 chemicals from one dispenser. Ideal for use with spray bottles, buckets or scrubber dryers, the system is designed with two separate proportioners making it suitable for combining high flow (14L/min) and low flow (4L/min) applications.



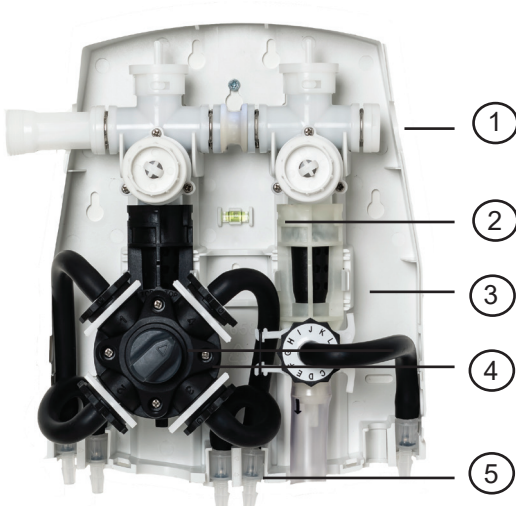
Accessories available:

Bottle bracket
Hanging bracket
Chemical cabinets

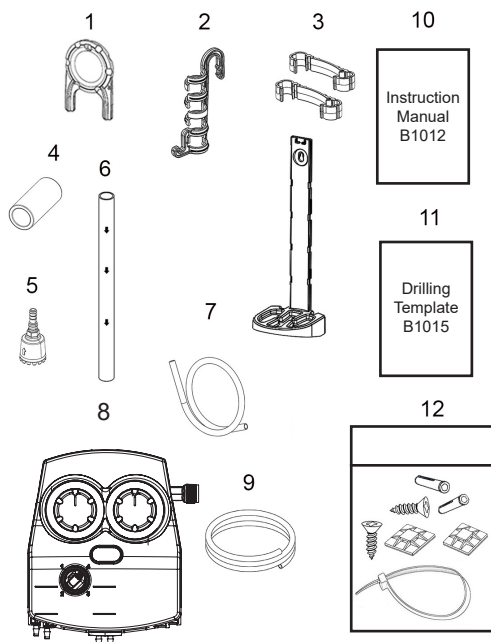
Approvals:

ASSE: Record Number: 1562
WaterMark: Licence No. WMK25899. Specification: ATS5200.101 - 2005

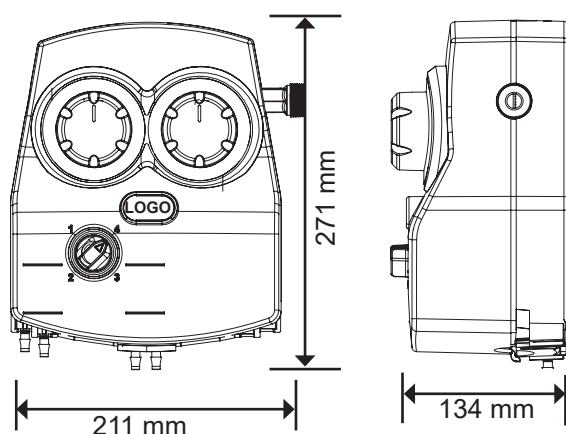
Dimensions (approx) (mm)	H 271 x W 211 x D 134
Weight (approx)	1.3 kg
Branding (mm)	Centre branding plaque: H 15 x W 40 Multi-lingual, colour-coded chemical pictograms
Installation	Working temperature range 4 – 65° C Working pressure range 2 – 5 bar Minimum water flow required: High flow = 8.5L/min Low flow = 3.5L/min
Dilution	13 independent dilution ratios High Flow 6:1 - 350:1 Low Flow 2:1 - 128:1
Material	Cover/Backplate/Dial Selector: Glass Bead Polypropylene (GBPP) Proportioner Pusher: ABS Internal tubing and seals: EPDM



1	Water inlet direction can be changed. 3/4" BSP or NPT male inlet connection
2	Easier installation: Built-in spirit level and multitude of drilling holes
3	Available in high flow and low flow versions with BrightGap or AirGap
4	4 Product Dial Selector to select chemical. Chemical is delivered via patented dilution pin that eliminates the need for metering tips and allows for selection of up to 13 dilution ratios per chemical
5	Chemical can be delivered from side chemical cabinets or from chemical containers installed at the bottom of the unit



In the Box	
1	Dispenser key
2	Bucket hook (high flow version)
3	Bottle bracket and clips (low flow version)
4	Ceramic weights
5	Foot filters
6	BrightGap/AirGap low flow outlet tube with flood ring
7	BrightGap/AirGap high flow 1.5m outlet tube with flood ring
8	ECOMULTI Compact unit
9	Clear PVC chemical suction tube
10	Instruction manual and chemical pictograms
11	Drilling Template
12	Screw Pack



Shipping Info			
Shipping Method	Quantity of units	Dimensions L x W x H (cm)	Net Packed Weight (kg)
Box	1	39 x 31 x 17	3.2
Carton	6	65 x 54 x 40	20
Pallet	54	120 x 100 x 117	191
Euro Pallet	36	120 x 80 x 117	135

Part Number	Description
DXC4L1H-WK	ECOMULTI Compact Low Flow x 4 High Flow x 1 White Cover Grey Ring Bright Gap
DXC4L1H-WK/AG	ECOMULTI Compact Low Flow x 4 High Flow x 1 White Cover Grey Ring Air Gap
DXC4L1L-WK	ECOMULTI Compact Low Flow x 5 White Cover Grey Ring Bright Gap
DXC4L1L-WK/AG	ECOMULTI Compact Low Flow x 5 White Cover Grey Ring Air Gap