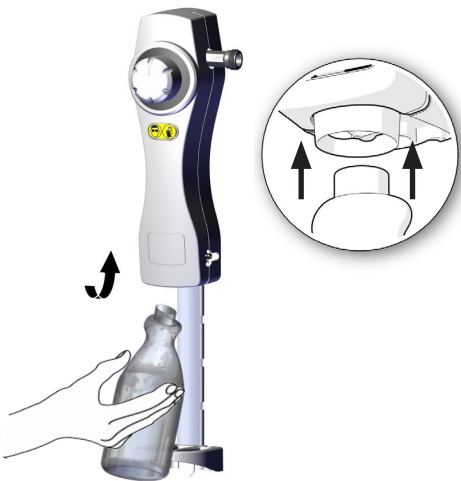


ECOMIX USER INSTRUCTIONS v1.1

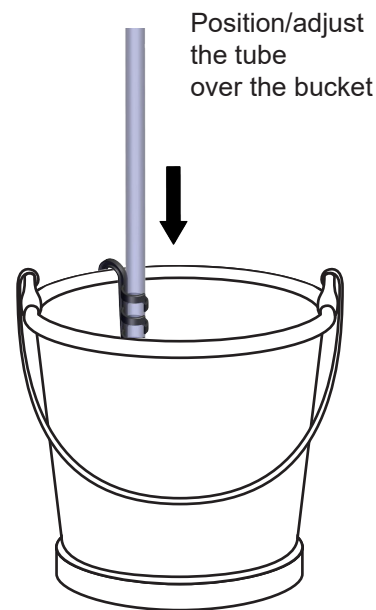
Prepare

Low flow (bottle)



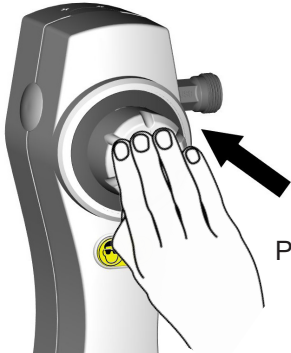
Push bottle up onto the nozzle to activate dispensing

High flow

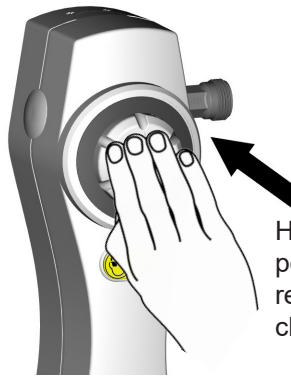


Position/adjust the tube over the bucket

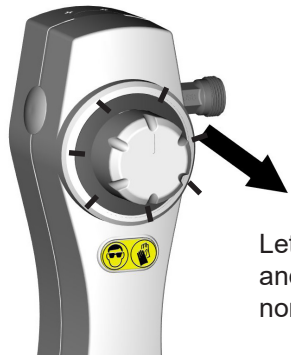
Operate



Press the pusher



Hold the pusher in position to dispense ready-to-use chemicals

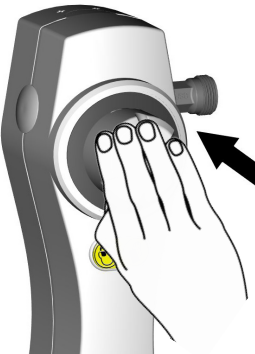


Let go of the pusher and it will return to its normal position

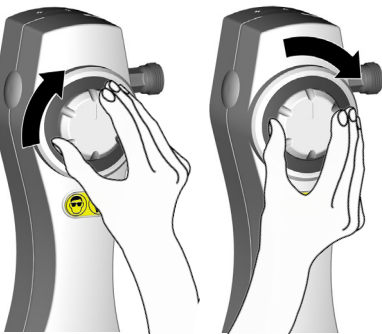
Auto-lock dispense

(This function will only work if it has been activated by a supervisor)

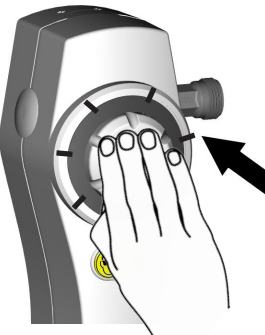
The auto-lock feature allows you to continuously dispense ready-to-use chemicals into a bucket, without having to hold the pusher



Press the pusher and hold



Twist the pusher clockwise until it locks into place



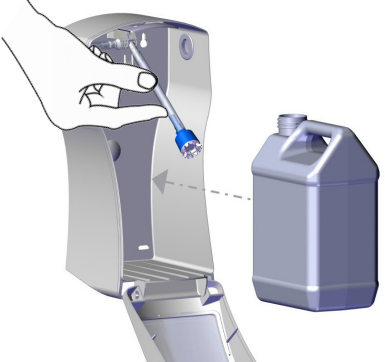
Once you have finished filling the bucket, deactivate the auto-lock function by pressing the pusher until you hear a click

CLICK

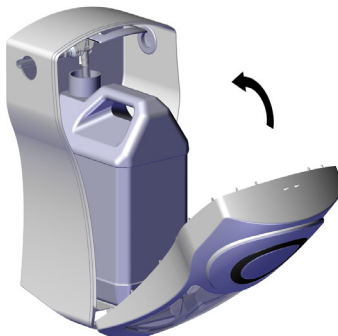
The unit will then return to operate manually, as standard

Refill/change consumables

Jerry Can

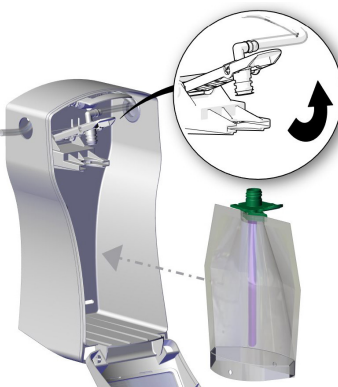


Lift the chemical outlet and insert the tubing inside the jerry can

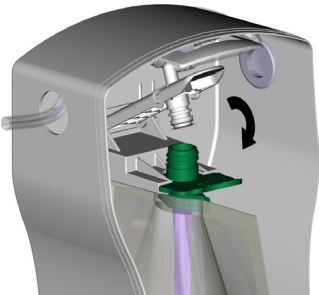


For health & safety purposes, close the cabinet lid once the jerry can is in place

Pouch



Lift the pouch lever and insert the chemical pouch



Once the chemical pouch is in position, push down pouch lever to secure the chemical flow



WARNING: Observe the guidelines from the chemical manufacturer regarding dilutions and safety advice. Follow instructions carefully to avoid accidents.

Health & Safety
Wear protective clothing, gloves and goggles when installing dispensers or handling chemicals.

