

ECOMIX COMPACT 2 Chemical Dispenser

Product Datasheet

ECOMIX is a venturi system that can dilute up to 2 chemicals from one dispenser. Ideal for use with spray bottles, buckets or scrubber dryers, the system is designed with two separate proportioners making it suitable for combining high flow (14L/min) and low flow (4L/min) applications.



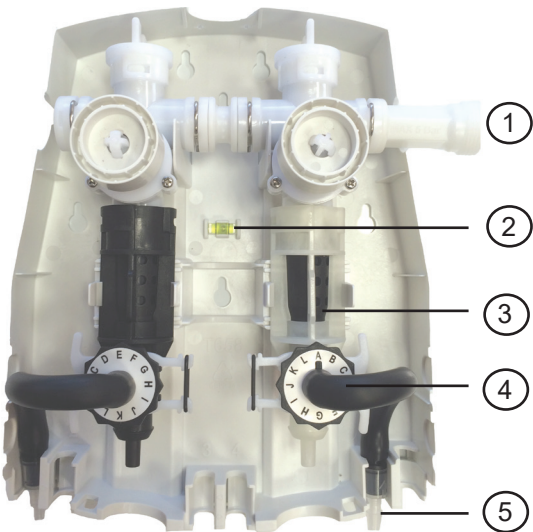
Accessories available:

Bottle bracket
Hanging bracket
Chemical cabinets

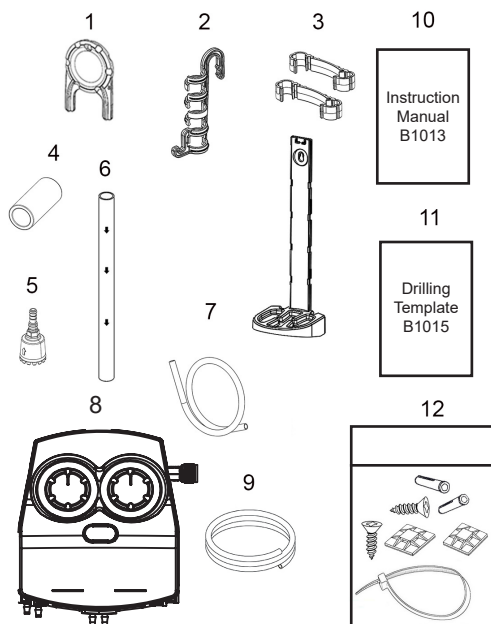
Approvals:

ASSE: Record Number: 1562
WaterMark: Licence No. WMK25899. Specification: ATS5200.101 - 2005

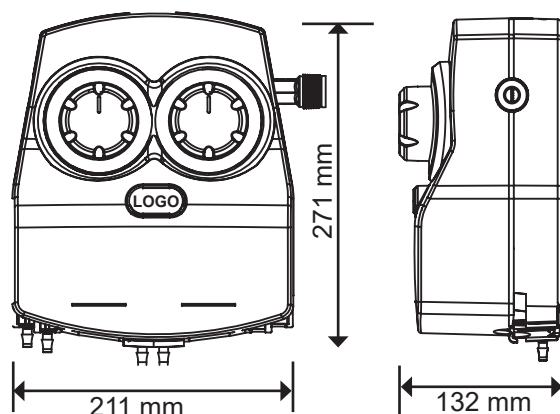
| | |
|--------------------------|--|
| Dimensions (approx) (mm) | H 271 x W 211 x D 132 |
| Weight (approx) | 1 kg |
| Branding (mm) | Centre branding plaque: H 15 x W 40 Multi-lingual, colour-coded chemical pictograms |
| Installation | Working temperature range 4 – 65° C Working pressure range 2 – 5 bar Minimum water flow required: High flow = 8.5L/min Low flow = 3.5L/min |
| Dilution | 13 independent dilution ratios High Flow 6:1 - 350:1 Low Flow 2:1 - 128:1 |
| Material | Cover/Backplate: Glass Bead Polypropylene (GBPP) Proportioner Pusher: ABS Internal tubing and seals: EPDM |



| | |
|---|--|
| 1 | Water inlet direction can be changed. 3/4" BSP or NPT male inlet connection |
| 2 | Easier installation: Built-in spirit level and multitude of drilling holes |
| 3 | Available in high flow and low flow versions with BrightGap or AirGap |
| 4 | Chemical is delivered via patented dilution pin that eliminates the need for metering tips and allows for selection of up to 13 dilution ratios per chemical |
| 5 | Chemical can be delivered from side chemical cabinets or from chemical containers installed at the bottom of the unit |



| In the Box | |
|------------|---|
| 1 | Dispenser key |
| 2 | Bucket hook (high flow version) |
| 3 | Bottle bracket and clips (low flow version) |
| 4 | Ceramic weights |
| 5 | Foot filters |
| 6 | BrightGap/AirGap low flow outlet tube with flood ring |
| 7 | BrightGap/AirGap high flow 1.5m outlet tube with flood ring |
| 8 | ECOMIX Compact unit |
| 9 | Clear PVC chemical suction tube |
| 10 | Instruction manual and chemical pictograms |
| 11 | Drilling Template |
| 12 | Screw Pack |



| Shipping Info | | | |
|-----------------|-------------------|---------------------------|------------------------|
| Shipping Method | Quantity of units | Dimensions L x W x H (cm) | Net Packed Weight (kg) |
| Box | 1 | 39 x 31 x 17 | 2 |
| Carton | 6 | 65 x 54 x 40 | 13 |
| Pallet | 54 | 120 x 100 x 117 | 128 |
| Euro Pallet | 36 | 120 x 80 x 117 | 92 |

| Part Number | Description |
|---------------|--|
| DPC1L1H-WK | ECOMIX Compact Low Flow x 1 High Flow x 1 White Cover Grey Ring Bright Gap |
| DPC1L1H-WK/AG | ECOMIX Compact Low Flow x 1 High Flow x 1 White Cover Grey Ring Air Gap |