

ECOMINI

Chemical Dispenser

Product Datasheet

Version 1.0, November 2016

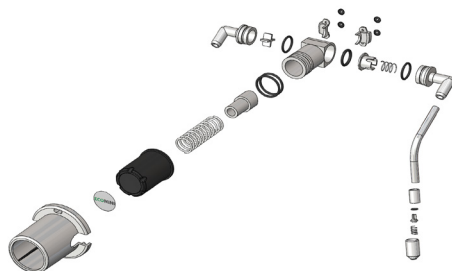
ECOMINI is a push-operated pump, designed to deliver detergent directly from a product container into a commercial kitchen sink. It features a fixed 30ml dose and a 125mm outlet spout. A longer, 300mm spout is also available that can swivel between two sinks allowing the use of a single pump. The pusher has been designed to match the design of the existing ECO RANGE.



125mm spout version

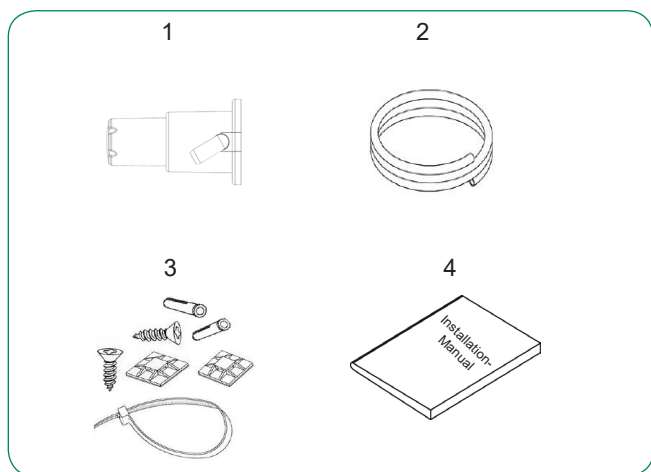


300mm spout version

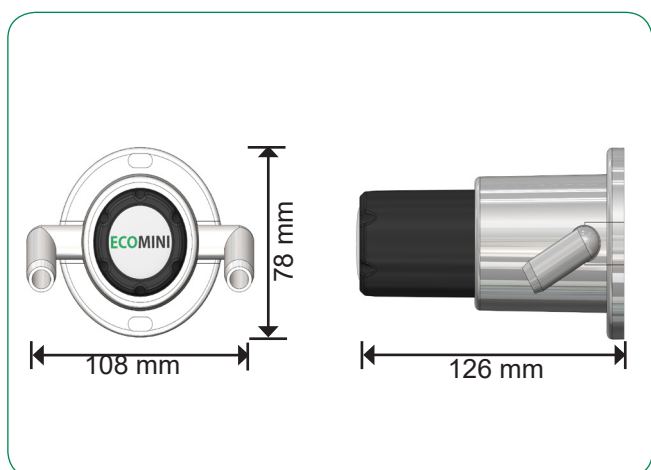


Exploded diagram

Specifications	
Dimensions (approx) (mm)	H 78 (without spout) x W 108 x D 126
Weight (approx)	0.55 kg
Branding	<ul style="list-style-type: none"> As standard the dispensers will arrive with a ECOMINI branded domed label Bespoke labels can be ordered separately in packs of 100, or they can be fitted onto the product during manufacture for a minimum order quantity of 288 units
Installation	Easy to set up wall-mounted dispenser, available with a non-drip aluminium or stainless steel spout
Dilution	30ml standard
Pusher material	acetal
Order Options (subject to MOQ's)	<ul style="list-style-type: none"> Bespoke install kits Bespoke rubber seals Bespoke spring
Packaging	<ul style="list-style-type: none"> Packed in a pulp tray and recycalbe cardboard



Contents of the box (for all versions)	
1	Dispenser
2	PVC tube 15mm x 12 mm x 2.5m
3	Screw pack
4	Installation manual



Shipping Information			
Shipping Method	Quantity of units	Outer Dimensions L x W x H (mm)	Packed Weight (kg)
Unit carton	1	275 x 210 x 80	0.46
Export carton (Outer carton reinforced single flute box)	36 units	650 x 500 x 540	16.56
Standard Euro Pallet	8 export cartons (= 288 units)	1200 x 800 x 1120	132.48

ECOMINI VARIANTS

DMM125A/D9	ECOMINI, 125mm Aluminium spout with Nitrile O'ring seals, Standard spring, acetal pusher, polypropylene body, 30mm dose
DMM300A/D9	ECOMINI, 300mm Aluminium spout with Nitrile O'ring seals, Standard spring, acetal pusher, polypropylene body, 30mm dose
DMM125S/D9	ECOMINI, 125mm stainless steel spout with Viton seals, Standard spring, acetal pusher, polypropylene body, 30mm dose
DMM300S/D9	ECOMINI, 300mm Stainless Steel spout with Viton seals, Standard spring, acetal pusher, polypropylene body, 30mm dose