

CONTENTS

Introduction2
 Installation2
 Initial Operation3
 Circuit Board Settings4
 Inline / Corner Conversion6
 Scrap Trap Conversion8
 Alternative Sanitizer Injection9
 Maintenance Schedule10
 Troubleshooting11
 Wiring Diagram12
 Electrical Box Parts13
 Plumbing Parts14
 Wrapper Parts15
 Pan / Drain Parts16
 Stand / Drain Parts17
 Pump Assembly Parts18
 Accessory Kit Parts19
 Warranty Information20
 Knight Locations20

SPECIFICATIONS

Wash Tank Capacity 1.75 Gallons
 Wash Pump Capacity 57 GPM
 Recommended Wash Temp 140 Degrees
 Water Inlet 3/4"
 Drain I.P.S. 1.5"
 Wash Pump Motor 1 HP
 Dimensions 25.5" D x 25.5" W x 67" H
 Table Height 34"
 Max. Clearance For Dishes 17"
 Standard Dish Rack 20" x 20"
 Voltage 120V/60Hz, 240V/50-60Hz
 Load Amps 14, 7



CAUTION: Wear protective clothing and eyewear when dispensing chemicals or other materials. Observe safety handling instructions (MSDS) of chemical mfrs.



CAUTION: To avoid severe or fatal shock, always disconnect main power when servicing the unit.

CAUTION: When installing any equipment, ensure that all national and local safety, electrical, and plumbing codes are met.

INTRODUCTION

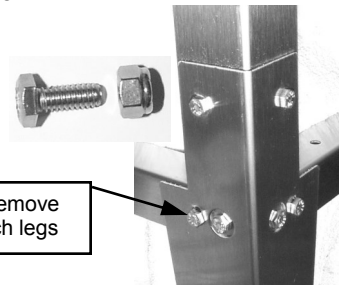
The KLE 175 GT dishwasher is designed to provide years of excellent warewash results under many types of conditions. Each unit is configured as an automatic start dishwasher, meaning that the dishwasher starts when the doors are closed. The dishwasher includes a three product chemical dispenser located on top of the dishwasher which dispenses liquid detergent, rinse product, and a chemical sanitizer suitable for low temperature (recommended 140 deg. F applications.) Options and additional features are also available. Contact your nearest Knight representative for more details.

INSTALLATION - Caution – Access into electrical enclosure must be performed by authorized personnel.

1. Inspect the dishwasher upon initial receipt. Lift the door arm and open the accessory package located inside the dishwasher. Note that it includes spray arms and other equipment required for installation.
2. Examine the spot where the dishwasher is to be operated. Insure that all electrical and plumbing connections, as well as dish table placement have been considered for installation. Parameters:

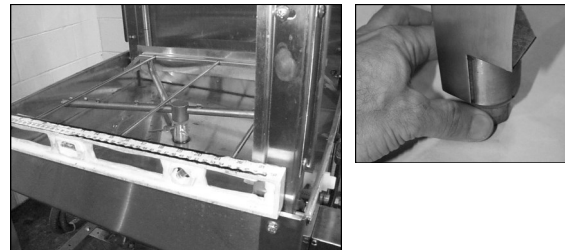
Electrical	Water line	Drain line
- 120V 20 AMP circuit or - 240V 10 AMP circuit (not field convertible)	20 psi flow pressure 140 deg. F 3/4" FPT on machine	1-1/2" MPT on scrap accumulator

3. Install leg extensions. Each leg requires 4 bolt assemblies, 1/4-20x1/2" long, to secure legs to dish machine. Bolts are located in the accessory kit envelope and on stand. This job requires two people. Lean the machine back and install two leg extensions, lean the machine in the other direction and install the other two legs.



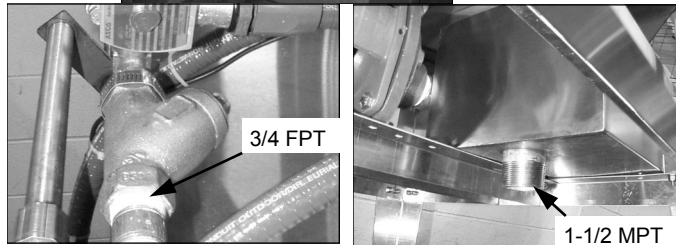
Attached to stand, remove and reinstall to attach legs

4. Install detergent, sanitizer, and rinse tubing to the peristaltic pumps. Use the provided hose clamp ties to secure delivery tubing to squeeze tubing. Feed outlet tubing to 70 deg. elbow on side of pan directly over the sump. Tubing installation is easier if done before tabling installation.

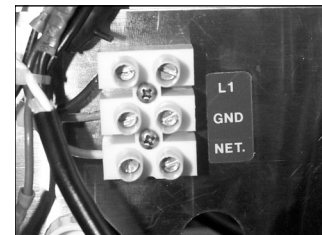


5. Place the dishwasher at the spot desired for normal operation. Level the dishwasher using adjustable bullet feet at the bottom of the legs. Install spray arms included in the accessory box.

6. Connect hot water supply line to the 3/4 FPT line strainer at rear of machine. Ensure that water pressure is sufficient for fill (approx. 10 GPM flow @ 20 psi.). Connect drain to 1-1/2" MPT nipple on scrap accumulator.



7. Make electrical connections (refer to data plate for voltage and current ratings) to the labeled barrier provided at the inside back of the control box. Run all electrical wire through suitable conduit and insure all connections are made in accordance with local wiring codes. It is recommended that the circuit breaker carrying the dishwasher load have NO OTHER ELECTRICAL DEVICES connected.

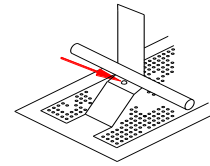


8. Attach prewash and drying tables to the dishwasher, insuring that sufficient space is provided for the dishwasher operator. Insure that adjustable legs on prewash and drying tables have been adjusted for proper drainage of water.

INITIAL OPERATION

1. Check pump intake screen for proper installation.

2. Start with all switches in the OFF position.



Hook tab under rod

3. Turn on main power switch. With doors closed, flip-up the fill button to fill the dishwasher with fresh 140 deg. F water (120 F min.). Fill until level with top of drain ball tube.



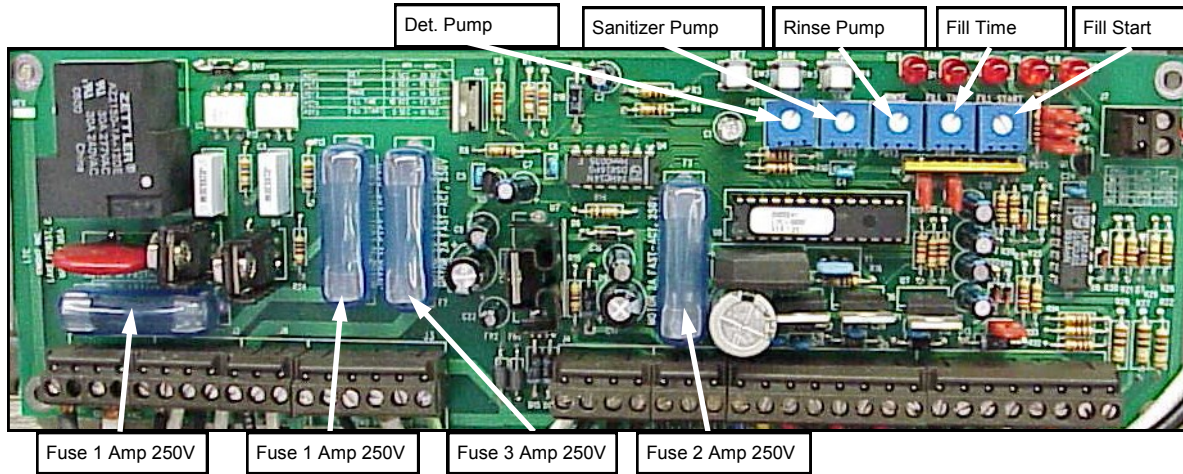
4. Turn ON the RUN POWER switch and with doors in closed position the machine will start to wash. Allow machine to run through one cycle and watch machine sequence through the following wash cycle: (90 second cycle evaluated). Machine can be adjusted to 360, 120, 90 or 72 second cycles. See below for more details. Cycle adjustments will need to be done by authorized personnel only.

		TIME
WASH	1 second – wash pump motor turns on	0
	3 seconds – detergent pump runs for adjusted period of time.	10
		20
		30
		40
DRAIN	45 seconds – drain opens and machine drains for 15 seconds.	50
	Adjustable 48 to 60 seconds – fresh water valve opens and rinses inside of dishwasher (drain is still open).	60
	60 seconds – drain closes and fill remains open for period of time to fill dish machine.	70
RINSE	70 seconds – sanitizer and rinse pumps run for an adjustable period of time.	80
	70 seconds – wash pump motor stops for three seconds then starts to “burp” the machine.	90
	90 seconds – machine will stop. This is the end of the wash cycle.	

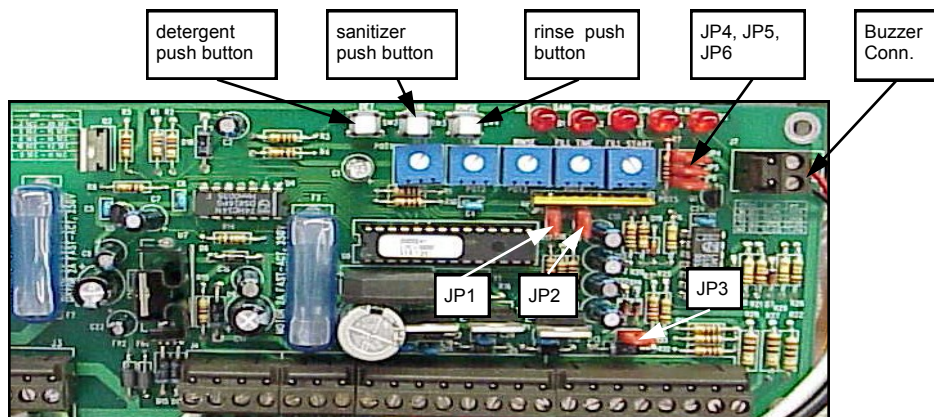
5. Machine is factory adjusted but may need to be adjusted to local water pressure to operate properly.

TIME SETTINGS

Time settings will need to be done by authorized personnel only. The time settings for detergent pump, fresh water fill, sanitizer pump, and rinse pump are done inside the control box using the single turn pots. The pots control the time duration of each of the listed components. Use the chart below to make settings.



POT CONTROL	ACTIVE TIME IN 90 SECONDS	SPAN OF POT TIME ADJUSTMENT	COMMENTS
Detergent Pump	at time = 3 seconds	2-30 seconds	pot turns from 7 o'clock to 5 o'clock or 10 divisions. Each division is 2.7 seconds. Pump flow is approximately 1.3 ml/sec.
Sani Pump	at time = 70 seconds	0-15 seconds	pot turns 7 o'clock to 5 o'clock or 10 divisions. Each division is 1.5 seconds. Pump flow is approximately 1.3 ml/sec.
Rinse Pump	at time = 70 seconds	0-15 seconds	pot turns 7 o'clock to 5 o'clock or 10 divisions. Each division is 1.5 seconds. Pump flow is approximately 1.3 ml/sec.
Fill Start	at time = 48 to 59 seconds	0-11 seconds	fill start is activated during the fixed drain cycle (45 to 60 seconds) at the 7 o'clock setting time is 0 and will start fill at 48 seconds in cycle. At the 5 o'clock setting time is 11 seconds and will start fill at 59 seconds in cycle. Fill start is set according to water pressure and the required time to rinse debris down the drain. Normal setting at 20 psi flow pressure is 12 o'clock or 5.5 seconds.
Fill Time	determined by fill start	10-42 seconds	begins at the setting of the fill start. Once fill start is set the fill time determines the duration of time fresh water solenoid valve remains open. 7 o'clock setting time is 10 seconds, 5 o'clock setting time is 42 seconds. Adjust according to water pressure. Normal setting at 20 psi flow pressure is 11 o'clock or 15 seconds.



JUMPER SETTINGS

Jumper settings will need to be done by authorized personnel only. **JP1** and **JP2** control the wash cycle time. Machine is factory set at 90 second wash cycle. Use table below to activate other wash cycles. Turn OFF main power switch to change cycle times. Adjust Fill time, Fill start and other Pots for proper operation.

JUMPER	72 SEC	90 SEC	120 SEC	360 SEC
JP1	OPEN	OPEN	CLOSED	CLOSED
JP2	CLOSED	OPEN	OPEN	CLOSED

NOTE: JP3 MUST BE CLOSED FOR PROPER OPERATION OF KLE 175GT.
 JP3 MUST BE OPEN FOR PROPER OPERATION OF KLE 150GT.

JP4, JP5 and JP6 control proof of chemical delivery. They should be **closed** if proof of chemical delivery kit (P/N 7501318 optional) is not installed. Machine can be ordered with proof of chemical delivery kit or kit can be ordered separately.

PRIME CHEMICAL PUMPS

Each chemical pump can be primed simply by turning the delime switch to “ON” position during run time of pump in wash cycle. This feature eliminates opening the control box lid to prime pumps using push button prime switches.

CIRCUIT BOARD PUSH BUTTONS

Circuit board control done by authorized personnel only.

- Detergent Push Button- Activates detergent pump if the main power switch is ON.
- Sanitizer Push Button- Activates sanitizer pump if the main power switch is ON.
- Rinse Push Button- Activates rinse pump if the main power switch is ON.

NORMAL OPERATION

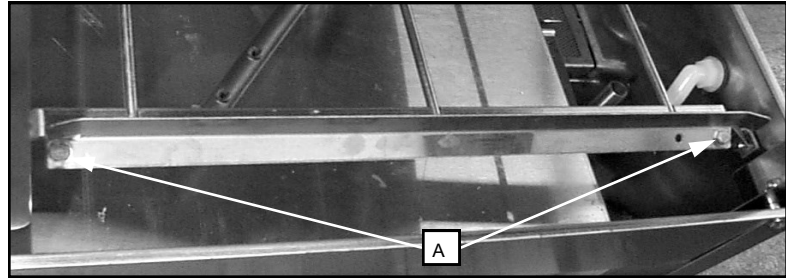
1. Manually remove food debris from dishes, glasses, cups, etc. The better the pre-rinse the better the wash.
2. Place dishes, glasses, cups, etc. in dish rack. Do not stack dishes. Ensure glasses and cups are placed upside down.
3. With the run power switch ON, close dish machine doors and machine will start. The wash cycle will take 90 seconds (360, 120 or 72 seconds).

INLINE OR CORNER DOOR CONVERSION

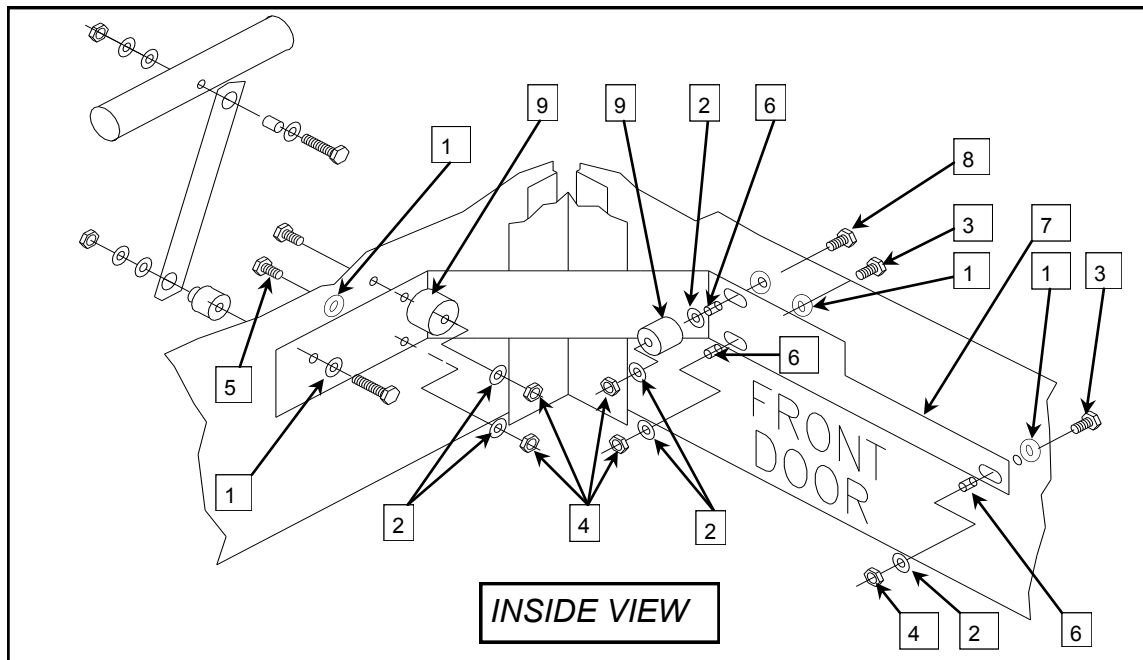
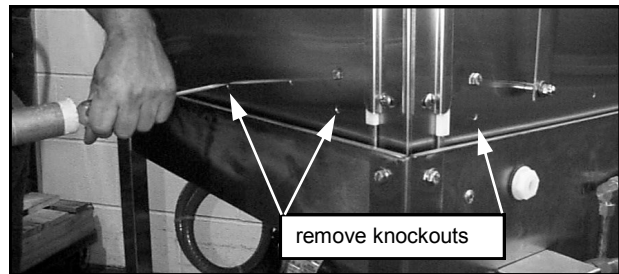
Conversion from inline to corner can be done by changing the location of the tray stop on the tray rails and installing door conversion bracket and screws in the accessory kit. Two 7/16 wrenches will be needed to make the conversion.

Conversion of the machine is easier if done before tabling is attached. Machines are factory set in the inline configuration.

1. Remove the two (A) bolts/nuts securing the tray rail stop located on the tray rail and reposition to desired configuration.



2. Make sure sump screen is in place over the pump intake tube so no parts fall in to the pump! Remove the two knockouts on the front door. One is located in the center and the other is directly below the right side door stop bumper. Remove one knockout directly below bumper on right side door.



3. The accessory kit supplied with the dish machine contains the door strap and fasteners required to convert the machine. Table below describes part provided for conversion in this kit.

No.	DESCRIPTIONS	No.	DESCRIPTIONS	No.	DESCRIPTIONS
1	P/N 9600421, 1/4" brass washer (4)*	4	P/N 1400462, 1/4-20 nylock nut. (3)*	7	P/N 9660905, Door conn. Strap (1)*
2	P/N 9600430, 5/16 S. S. Washer (3)*	5	P/N 9600423, 1/4-20 x 1/2" long bolt (1)*	8	P/N 9600436, 1/4-20 x 1 1/2" long bolt. (1)*
3	P/N 9600425, 1/4-20 x 3/4" long bolt (3)*	6	P/N 9600819, 1/4" long spacer . (3)*	9	P/N 9640903, Door stop 3/4"

* Provided Hardware.



4. Use the scrap accumulator tray to prop the front door open. Install bracket on front door first. Use provided bolts, install brass washer against the inside surface of the door, then spacer, stainless steel washer, and nut on two lower holes as shown. Use long bolt on upper hole with other existing hardware to secure strap to door.

5. Remove the nut / bolt assembly on the right side door where bracket will attach. Use the scrap accumulator tray to prop the front and right side doors open. Install door strap with provided short bolt and other existing hardware as shown on right side door.

-IMPORTANT CAUTION-

The door handle is spring loaded and will rise to open position when handle link is disconnected from the door.

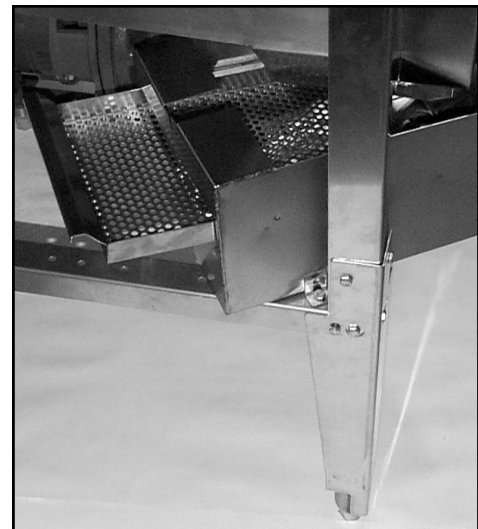
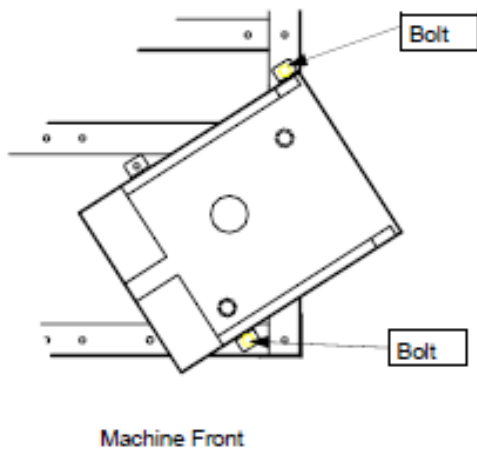
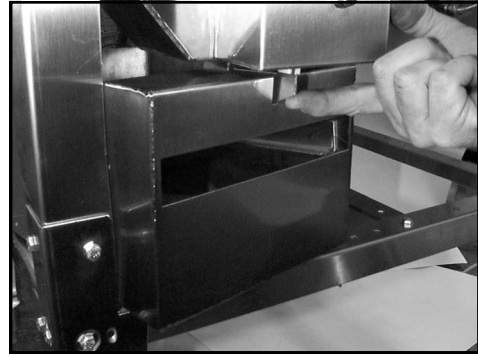
6. After right and front doors are attached together, (all three doors will rise when handle is lifted) disconnect left side door link at handle location to disconnect this door from handle assembly. Reinstall nut / bolt assembly in handle for future use.



SCRAP TRAP CONVERSION

If removal of the scrap trap screen is a problem due to space limitations, the scrap trap can be remounted for front removal. Simply remove the 2 mounting bolts securing the scrap trap box and slide box towards wash pump motor, lift drain lifting arm and slide through slit in box.

Remount box as shown, use care not to force box under drain ball lifting arm...it does not have to be forced.



Use mounting bolts to secure box as shown.

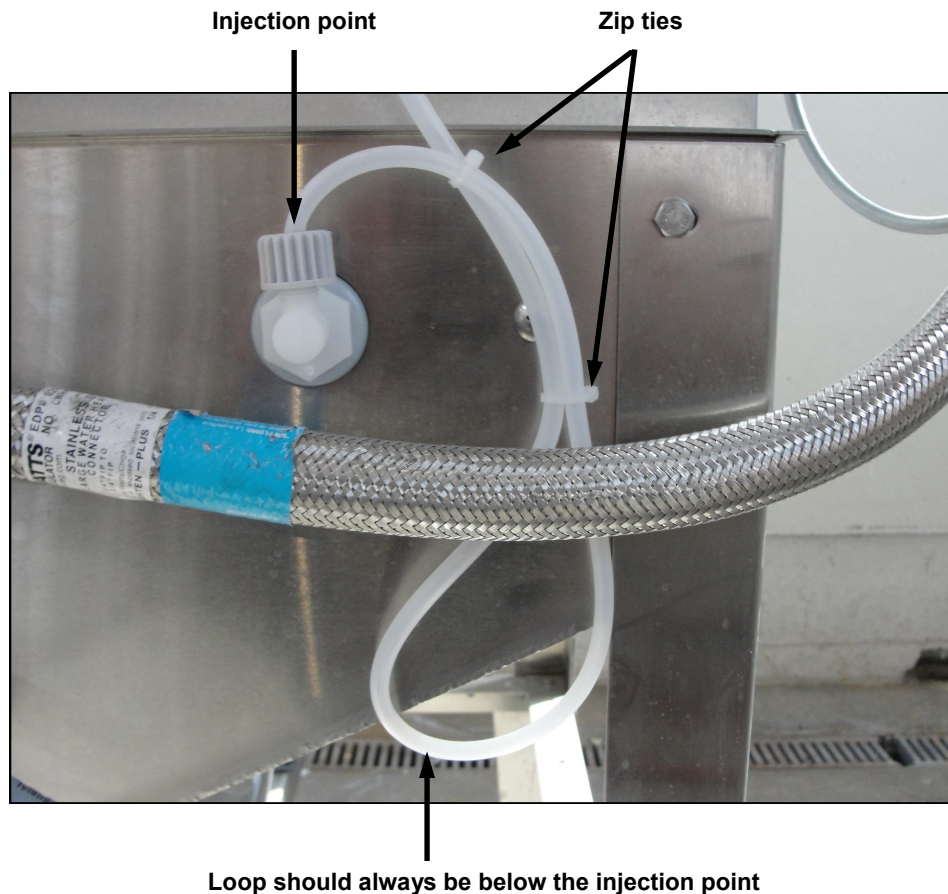
ALTERNATE SANITIZER INJECTION POINT

In the event that sanitizer chemical drips into the machine, there is an alternate installation practice to prevent this from occurring when the machine is not in use. This applies to all machines where the injection point is lower than the height of the chemical pump. This method of installation works on the simple premise that the chemical line loops below the injection point, then is routed back upward to the injection point.

NOTE: The injection point fitting shown below is only an example to show how to loop the tube upward. The fitting on your machine may look different.



INSTALLATION

- (1) Route the sanitizer chemical line slightly below the injection point.
- (2) Create a "loop" in the tubing approximately 12 inches (30 cm).
- (3) Attach the end of the tube to the injection fitting ensuring that the loop remains below it.
- (4) Use plastic zip ties to secure the loop in place.



MAINTENANCE SCHEDULE

CAUTION! Before performing periodic maintenance insure water supply valve is turned off and circuit breaker is in the OFF position.

TASK	FREQUENCY	PROCEDURE/COMMENTS
Clean fresh water line strainers	normal - every 2 months dirty - as needed	
clean scrap accumulator	at end of meal time or as needed	
clean drain ball and drain seat	once a day or as needed	wipe with damp wash cloth & detergent Do not press/wedge drain ball into drain seat. Set drain ball in place.
clean spray arms	once a day or as needed	 <p>remove end caps and dislodge any debris in spray jets with tooth pick or other pointed object. Flush length of spray arm with water.</p>
Wipe down outside of machine and tabling	once a day or as needed	use damp wash cloth and a detergent
Delime inside of machine	as required	use a delime solution as recommended by manufacturer. Pour solution in machine and start machine. Flip delime switch on and allow machine to run for 5 minutes.

TROUBLESHOOTING:

PROBLEM	CAUSE	REMEDY
Low/No spray arm pressure	<p>Impeller clogged</p> <p>Pump intake tube clogged</p> <p>Spray arm or spray tips clogged</p> <p>Low water level</p>	<p>*Remove pump face and clean impeller</p> <p>*Remove pump face and push debris out of pump intake tube</p> <p>Remove spray arm and clean (see maintenance table)</p> <p>Fill tank to proper level (see initial operation)</p>
Wash pump motor runs continuously	<p>Delime switch is on.</p> <p>Faulty circuit board.</p> <p>Motor relay is stuck</p>	<p>Turn delime switch off</p> <p>*Call for service</p> <p>Tap on relay see time setting section for relay location.</p>
Dish washer will not start	<p>Door is open</p> <p>Run power switch is OFF</p> <p>No supply voltage</p> <p>Delime switch is ON</p> <p>3/8 amp fuse to transformer is blown</p>	<p>Replace 3/8 amp fuse</p>
Chemical injection bad/poor (detergent, rinse, sanitizer)	<p>Not enough chemical</p> <p>Poor chemical flow</p> <p>Faulty chemical pump motor</p> <p>No chemical flow</p>	<p>*Adjust pot (time settings)</p> <p>Replace pump squeeze tube</p> <p>*Replace chemical pump motor</p> <p>Product container empty</p>
Leaky/noisy vacuum breaker	<p>Water pressure too low</p> <p>Water pressure too high</p>	<p>Clean screen (see maintenance schedule)</p> <p>Adjust fill pressure (see installation)</p>
Reduced wash results	<p>Worn spray arm bearing</p> <p>Washer not level</p> <p>Tray rails damaged</p>	<p>Replace bearing.</p> <p>Level with bullet feet (see installation)</p> <p>Replace tray rails.</p>
Dish washer will not fresh water fill	<p>Faulty solenoid valve</p> <p>Y'strainer screen clogged</p> <p>Water supply line is off</p> <p>Faulty push button fill switch</p> <p>Fill level not set correctly</p>	<p>*Call for service</p> <p>Clean screen (see maintenance schedule)</p> <p>Open supply valve</p> <p>*Call for service</p> <p>See installation section</p>
Dish washer will not drain	<p>Faulty drain solenoid</p> <p>Drain ball jammed in drain seat.</p> <p>Drain/fill fuse is blown</p>	<p>*Call for service</p> <p>Open machine and lift drain ball.</p> <p>Replace 2 amp slo blo fuse</p>
Brown stains inside machine	<p>High iron content in water</p>	<p>Delime machine to remove stains. When complete leave doors in open position to dry inside of machine.</p>

* By authorized personnel only.

KLE-175GT

WIRING DIAGRAM

BOARD CONTROLS:

CYCLE	JP1	JP2
90 SEC	OPEN	OPEN
120 SEC	CLOSED	OPEN
72 SEC	OPEN	CLOSED
360 SEC	CLOSED	CLOSED

JP3 CLOSED, KLE 175GT CYCLES_OPEN, KLE 150GT CYCLES

Det. PDT - Adjustable from 2 to 30 sec. (@3 sec.)
 Sani. PDT - Adjustable from 0 to 15 sec. (@70 - 80sec.)*
 Rinse PDT - Adjustable from 0 to 15 sec. (@70 - 80sec.)*
 Fill Start PDT - Adjustable from 0 to 11 sec. (@48 - 58sec.)*
 Fill Time PDT, 90 sec. cycle - Adjustable from 10 to 42 sec. (@48 - 59sec.)
 Fill time PDT, 120 sec. cycle - Adjustable from 10 to 62 second (@58 - 69sec.)
 *Values in parenthesis refer to 90 and 120 second time cycle respectively.

CIRCUIT BOARD
PART No. 7146000

COVER AREA

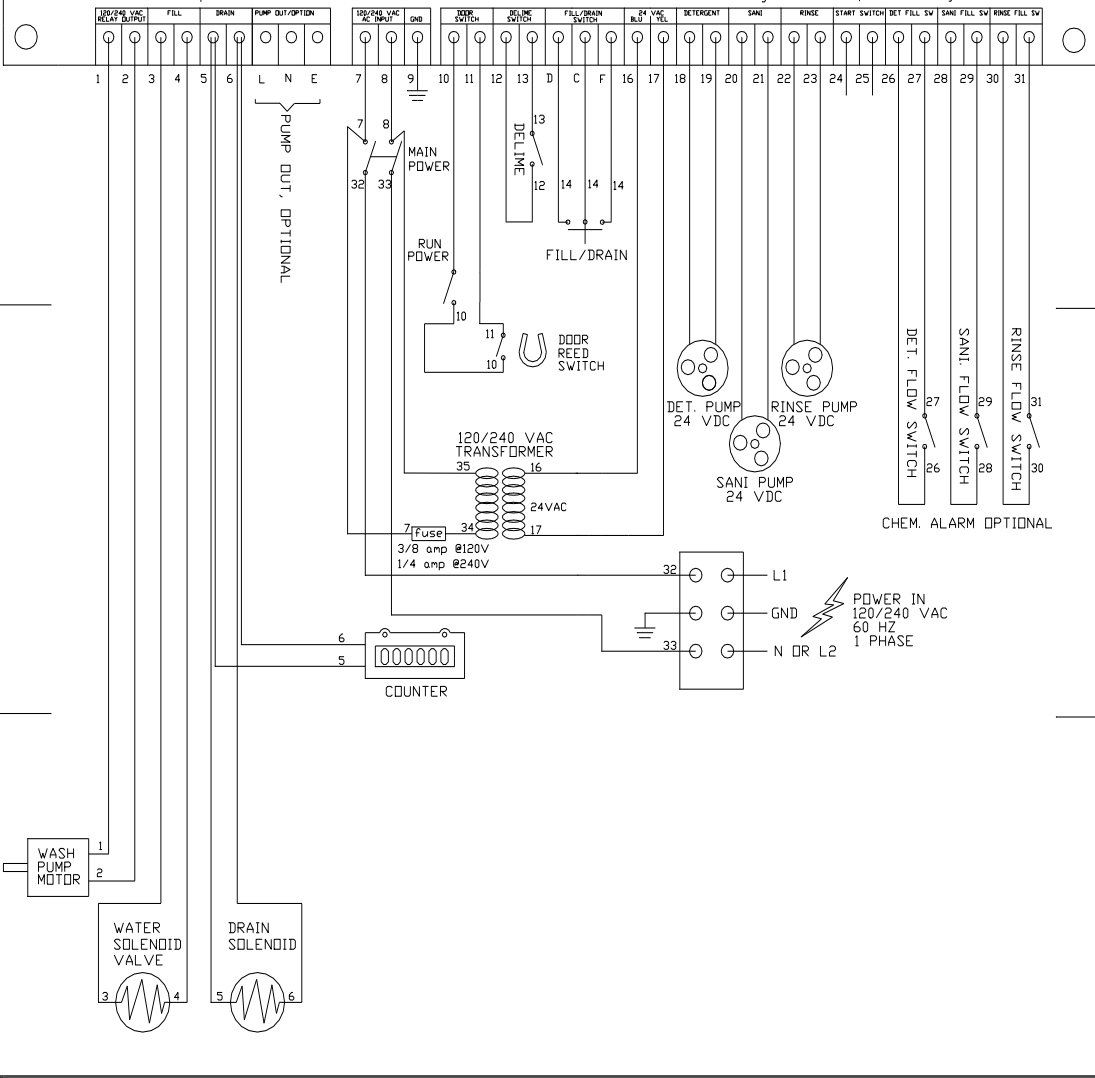
BOX AREA

MACHINE AREA

COVER AREA

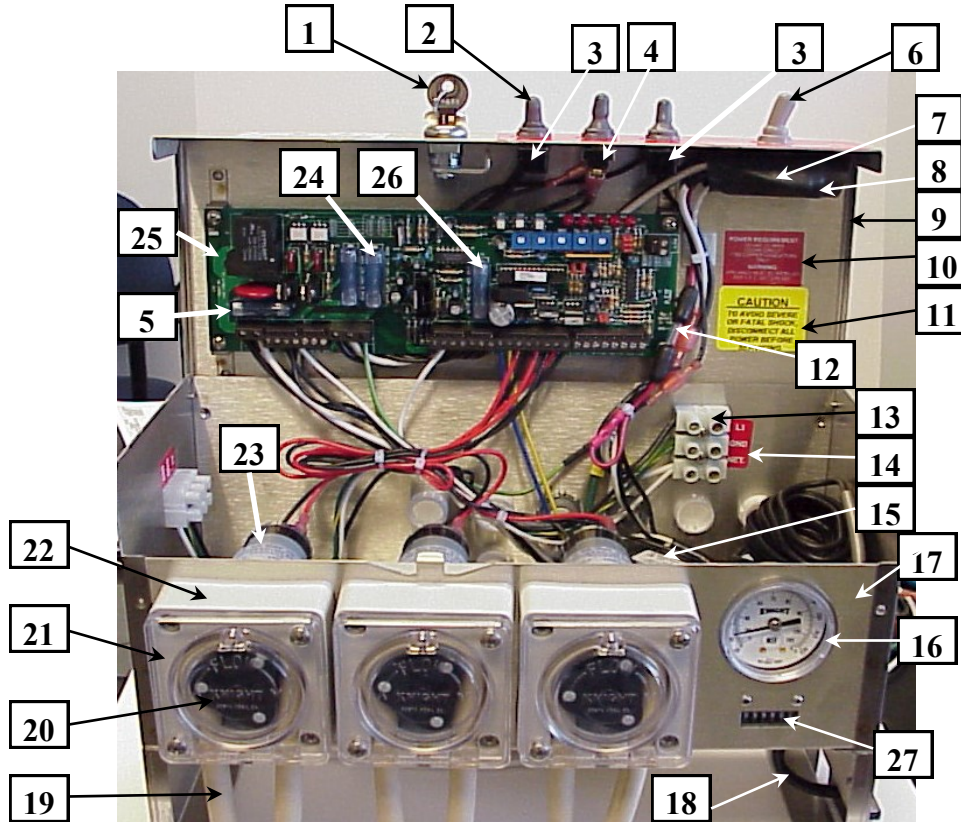
BOX AREA

MACHINE AREA



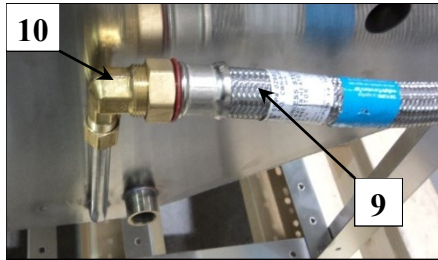
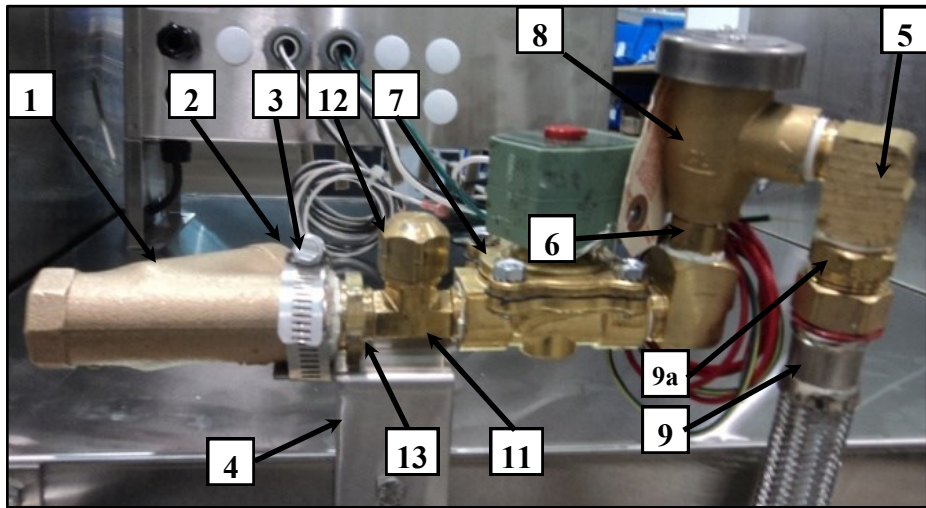
WIRE COLORS

1 BLACK	5 BLACK	9 GREEN	13 BLACK	17 YELLOW	21 RED	25 BLACK	29 BLACK	33 WHITE
2 WHITE	6 WHITE	10 BLACK	14 BLACK	18 BLACK	22 BLACK	26 RED	30 RED	34 RED TO BLACK
3 BLACK	7 BLACK	11 WHITE	15 BLACK	19 RED	23 RED	27 BLACK	31 BLACK	35 WHITE
4 WHITE	8 WHITE	12 BLACK	16 BLUE	20 BLACK	24 BLACK	28 RED	32 BLACK	



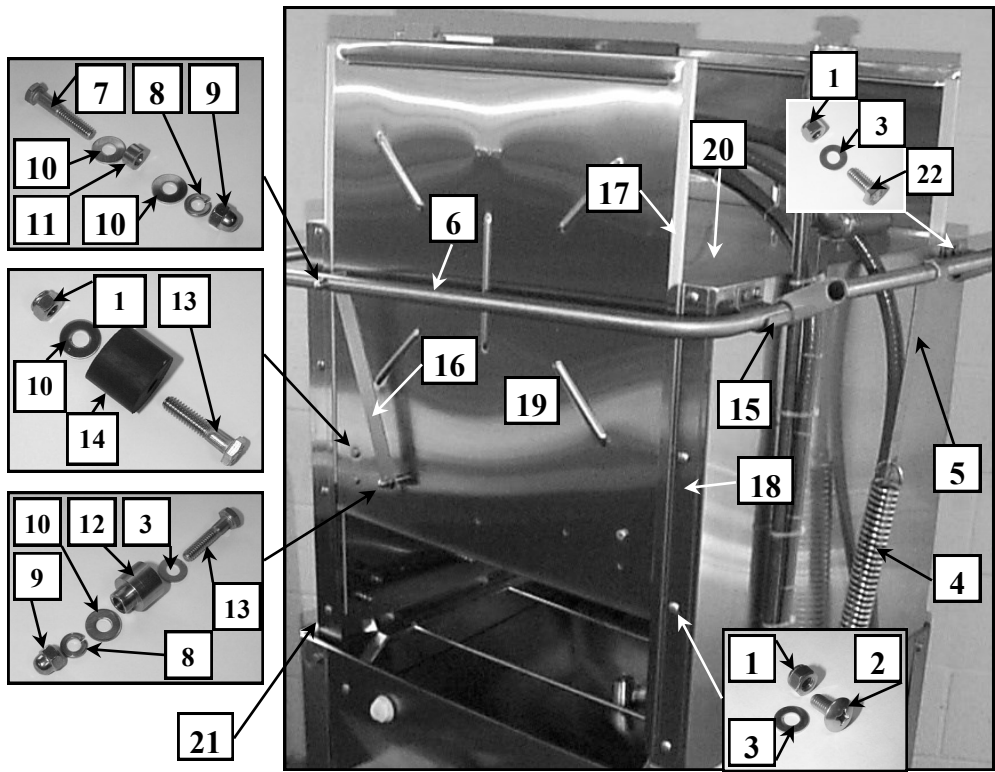
Electrical Box Assembly (Part No. 9640320 120 VAC 60 Hz)
(Part No. 9640320-03 240 VAC 50 Hz)

ITEM	PART No.	DESCRIPTION	QTY
1	1200392	LOCK WITH KEY (CAM 1200439, SPRING CLIP 1200353)	1
2	9600578	SWITCH RUBBER BOOT	3
3	7507400	TOGGLE SWITCH (ON/OFF)	2
4	9600861	FILL/ DRAIN SWITCH (SPDT)	1
5	7012028	FUSE, 1 AMP, 250 VOLTS. (FILL AND DRAIN SOLENOIDS)	2
6	9600987	BOOT, MAIN SWITCH	1
7	1900679	MAIN SWITCH DPST	1
8	9640328	SWITCH GUARD NEOPRENE	1
9	9640319	COVER 304 SS ASSEMBLY	1
10	9600498-1	POWER REQUIREMENT LABEL	1
11	1200445	CAUTION LABEL ELECTRICAL	1
12	0600311	FUSE 3/8 AMP, 125 VOLTS 1/4 DIA. X 1-1/4 LONG	1
13	0200500	BARRIER 3 POSITION	1
14	9600498	LABEL L1, GND, NET	1
15	2000601	TRANSFORMER TR-3124	1
16	9601975	TEMPERATURE GAGE	1
17	9640356	WELD ASSEMBLY, CONTROL BOX KLE 175 AND 150GT (NO COVER)	1
18	9640327-A	REED SWITCH WITH MAGNET (240 VOLT 96403273-A)	1
19	7018096	SQUEEZE TUBE T-53-T (NO PROOF OF FLOW)	3
20	7503453	3-LOBE ROLLER ASSEMBLY BLUE	3
21	7502312	FACE PLATE CLEAR	3
22	7501311	PUMP BODY ONLY	3
23	7010241	40 RPM, 24V DC MOTOR, (7010216, 15 RPM 24V DC MOTOR)	1,(2)
24	7012030	FUSE 3 AMP, 250 VOLTS (DRAIN PUMP, OPTIONAL)	1
25	7146000	LTC CIRCUIT BOARD	1
26	7012029	FUSE 2 AMP, 250 VOLTS 1/4 DIA. X 1-1/4 LONG	1
27	9640327-F	COUNTER 120 VAC (240 VOLT 96403273-F)	1



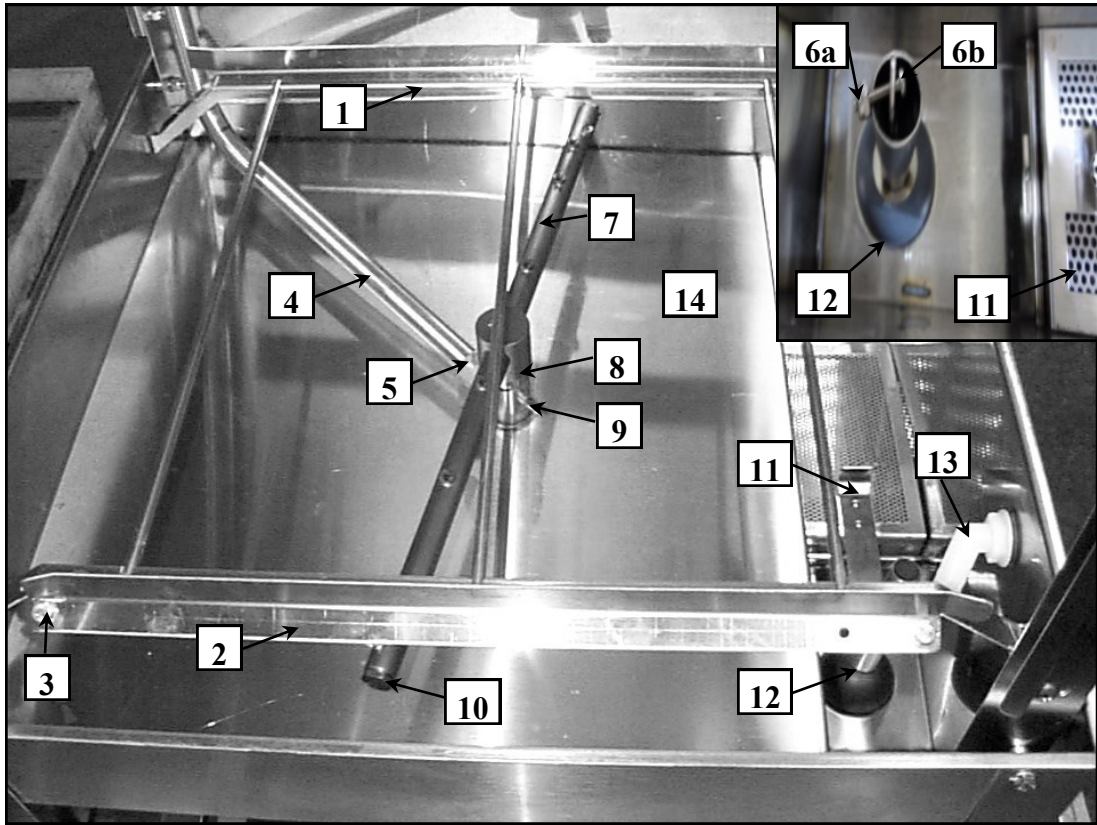
Plumbing (Part No. 9640524 120VAC 60Hz)
 (Part No. 9640524-03 240VAC 50Hz)

ITEM	PART No.	DESCRIPTION	QTY
1	9600410	"Y" STRAINER 3/4" FPT	1
2	9600407	1/4" MPT BRASS HOLE PLUG	1
3	9600158	2" HOSE CLAMP	1
4	9640934	PLUMBING BRACKET	1
5	9600510	ELL, STREET 1/2" NPT	2
6	9600549	NIPPLE 1/2" NPT X 1-1/2" LONG BRASS	1
7	9600551-01	SOLENOID VALVE 1/2" FPT (240 VOLT 9600551-3D)	1
7a	9641907	DIAPHRAGM REPAIR KIT ASCO VALVE (NOT SHOWN)	
8	7120102	VACUUM BREAKER 1/2" FPT	1
9	9600022	BRAIDED HOSE ASSEMBLY S.S. 48" LONG	1
9a	1600681	REDUCER NIPPLE, 3/4" MNPT X 1/2" MNPT	1
10	0600451	ELL 3/4" MPT X 1/2" COMP	1
11	9600358	TEE 1/2" MPT	1
12	9600359	CAP 1/2" NPT	1
13	9501554	BUSHING, 3/4" X 1/2" NPT	1



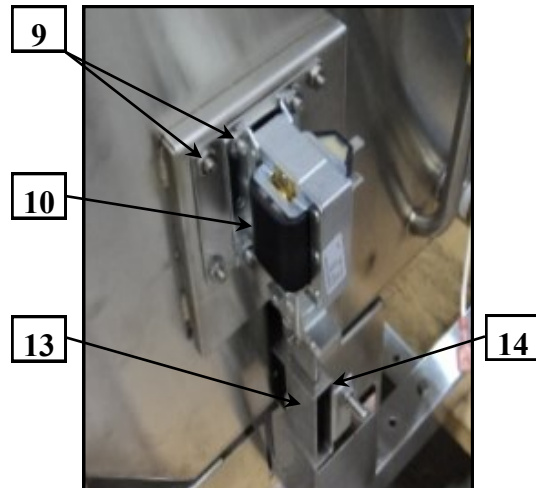
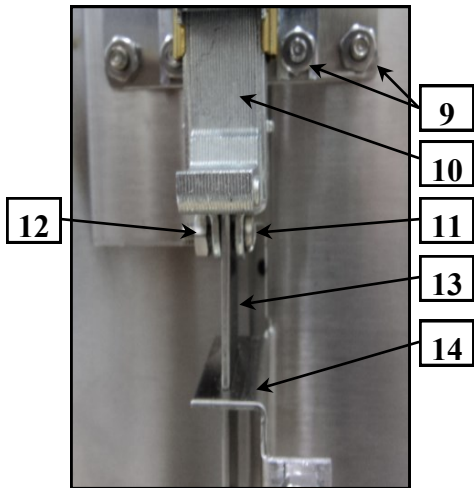
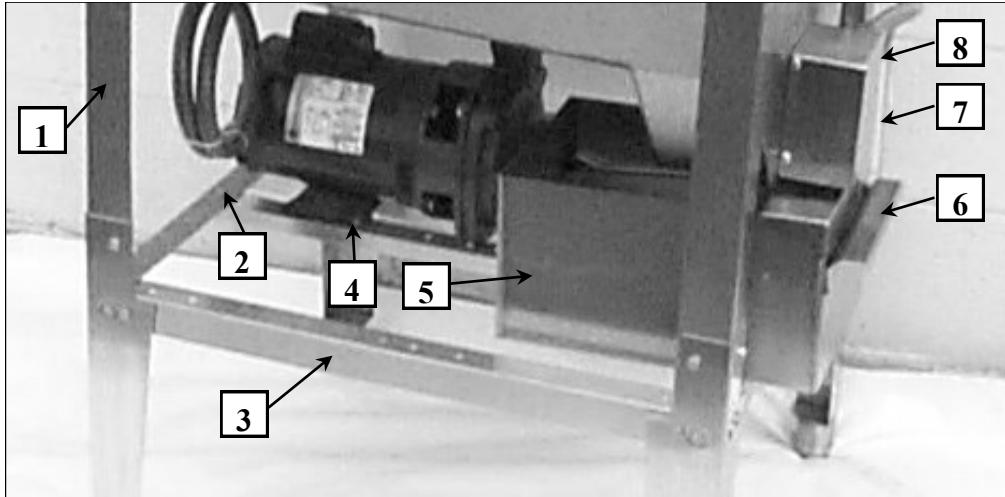
Wrapper Parts

ITEM	PART No.	DESCRIPTION	QTY
1	1400462	NUT, 1/4-20 SS W/NYLOCK	34
2	9600834	BOLT, TRUSS HEAD SS 1/4-20 X 5/8" LONG	24
3	9600421	WASHER BRASS .25 I.D. X .562 O.D.	34
4	9600416	SPRING DOOR	1
5	9641313	LINK HANDLE TO SPRING	1
6	9641312	HANDLE ASSEMBLY	1
7	9600436	BOLT, HEX HEAD S.S. 1/4-20 X 1-1/2" LONG	2
8	9600774	WASHER, SPLIT LOCK S.S. 1/4"	4
9	9600437	NUT, ACORN 1/4-20 S.S.	4
10	9600781	FLAT WASHER 1/4 S.S.	12
11	9600819	SPACER BUSHING 1/4" LONG S.S.	2
12	9600843	DOOR PIVOT	2
13	9600641	BOLT HEX HEAD S.S. 1/4-20 X 1-1/4" LONG	8
14	9640903	DOOR STOP NEOPRENE .75" LONG	6
15	9641310	HANDLE PIVOT	2
16	9641309	LINK HANDLE TO DOOR	2
17	9600465-22	DOOR STRIPS 22" LONG	6
18	9600609	DOOR GUIDES S.S.	6
19	9640413	DOOR (right, front, left)	3
20	9640203	WRAPPER WELD ASSEMBLY	1
21	9640204	WRAPPER UPRIGHTS (right and left same part)	2
22	9600835	BOLT, HEX HEAD S.S. 1/4-20 X 5/8" LONG	4



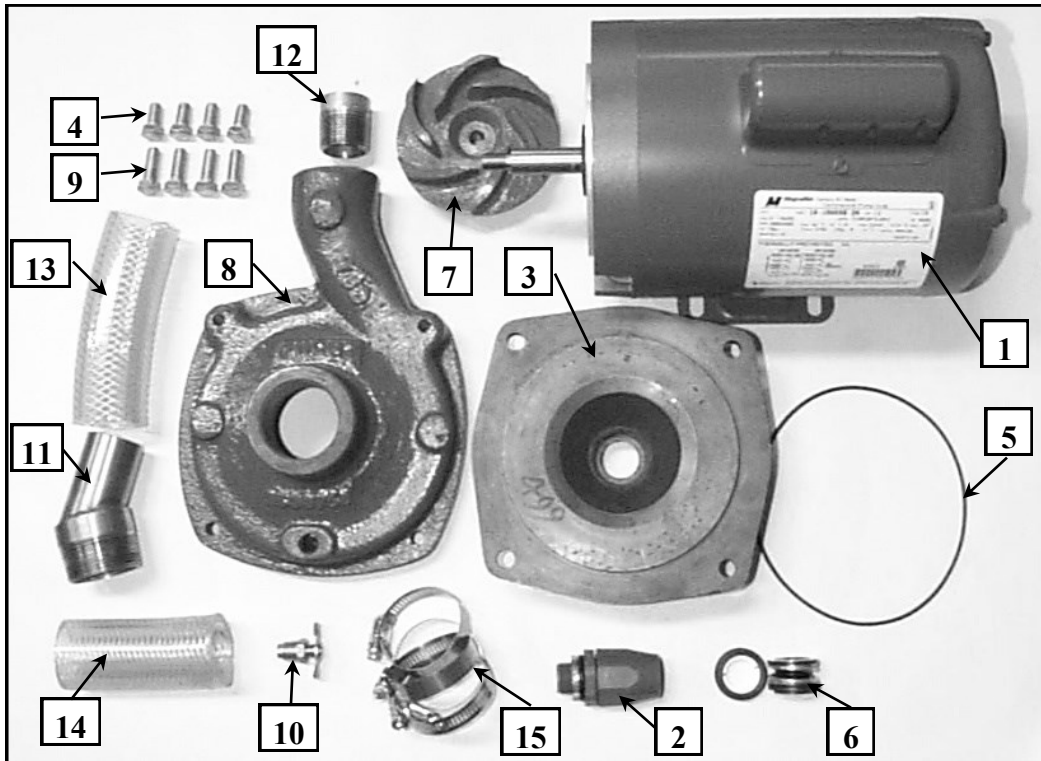
Pan & Drain Parts (Interior)

ITEM	PART No.	DESCRIPTION	QTY
1	9602148	TRAY RAIL ASSEMBLY	1
2	9660601	TRAY RAIL CONVERTER BAR	1
3	9600423	1/4-20 X 1/2 BOLT (NUT – 1400462 QTY 2)	2
4	9640527	MANIFOLD ASSEMBLY	1
5	9600423	1/4-20 X 1/2 BOLT	2
6a	9603065	NUT, 6-32 NYLOCK	1
6b	1900457	SCREW, PHP, 6-32 X 3/4, 18-8 SST	1
7	9600215	SPRAY ARM ASSEMBLY WITH END CAPS	2
8	9602205	SPRAY ARM BEARING	2
9	9600431	THUMB SCREW	3
10	9600417	END CAPS	4
11	9640710	SCREEN ASSEMBLY PUMP INTAKE	1
12	9641515	DRAIN BALL ASSEMBLY	1
13	9640550,9640551,7036070	45 DEG. CHEMICAL INJEC. ELBOW, 3/4" NPT NUT, GASKET EPDM	1,1,2
14	9660105	PAN WELD ASSEMBLY	1



Stand & Drain Parts (Exterior)

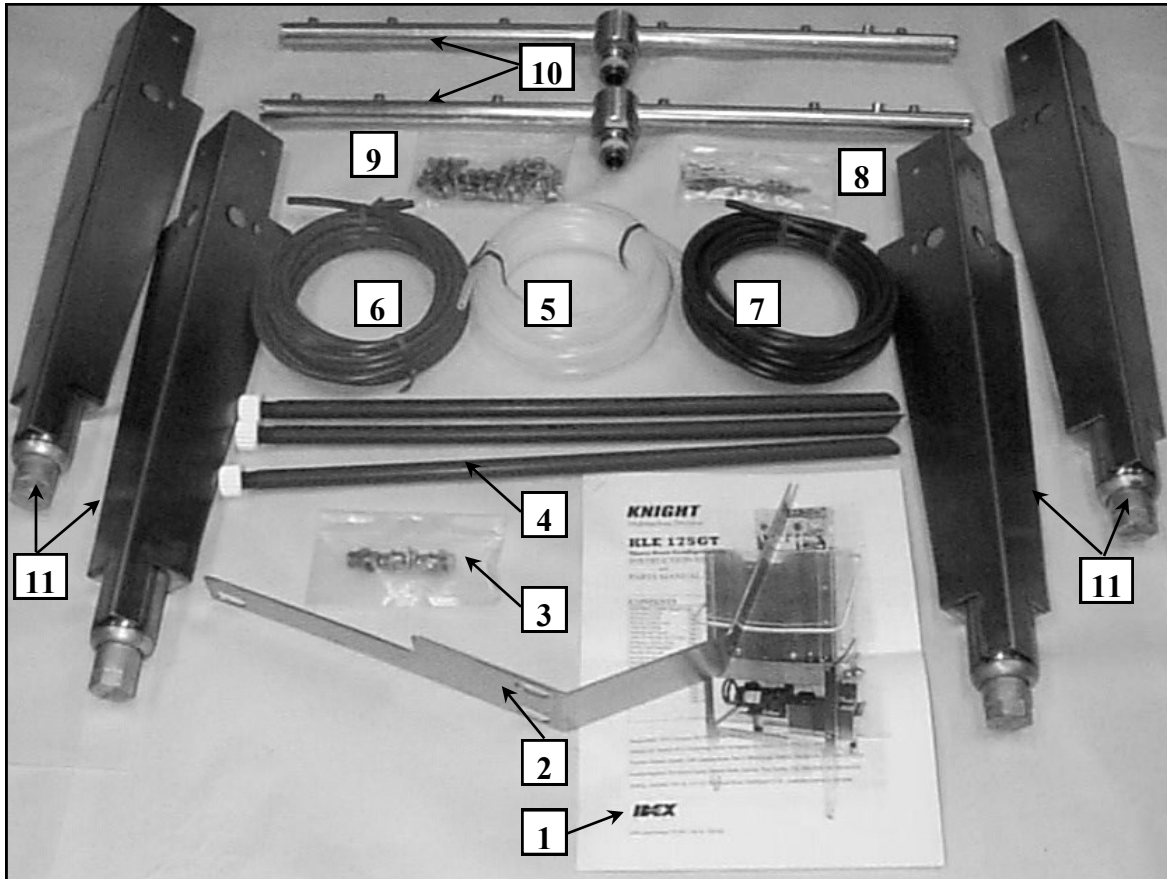
ITEM	PART No.	DESCRIPTION	QTY
1	9640803	STAND UPRIGHTS	4
2	9600423	1/4-20 X 1/2" BOLT (NUT 1400462 1/4-20 QTY 6)	16
3	9640802	STAND BASE	6
4	9600756	5/16-18 X 3/4" BOLT (WASHER 9600460, NUT 9600889)	2
5	9641405	SCRAP TRAP ASSEMBLY	1
6	9641408	SCRAP TRAY ASSEMBLY	1
7	9600437	1/4-20 ACORN NUT	1
8	9641512	DRAIN SOLENOID COVER	1
9	1400434	NUT 10-32 HEX, SS	8
10	9600444-1	DRAIN SOLENOID 120 V 60Hz (240 VOLT 9600454)	1
11	1900457	SCREW, PHP, 6-32 X 3/4, 18-8 SST	1
12	9603065	NUT, 6-32 NYLOCK	1
13	9660804	DRAIN LIFTING ARM	1
14	9660826-01	DRAIN LIFTING ARM GUIDE	1



Pump Assembly

(Part No. 9641205 120VAC 60Hz)
 (Part No. 9641205-03 240VAC 50Hz)

ITEM	PART No.	DESCRIPTION	QTY
1	9600008	PUMP MOTOR 1 HP 120 VAC 60 Hz	1
1	9600007	PUMP MOTOR 1 HP 240 VAC 50 Hz	1
2	9600790	1/2" STRAIGHT FLEX CONNECTOR	1
3	9600742	PUMP BASE	1
4	0200252	BOLT, HEX HEAD SS 3/8-16 X 3/4 LONG	4
5	9600748	O-RING FOR PUMP ASSEMBLY	1
6	9600745	PUMP SEAL KIT	1
7	9661202	OPEN IMPELLER	1
8	9600750	PUMP COVER	1
9	0200253	BOLT, HEX HEAD SS 3/8-16 X 1 LONG	4
10	9600478	PETCOCK 1/4" MPT	1
11	9640520	PUMP INTAKE TUBE 1-1/2 MPT	1
12	9601605	PUMP DISCHARGE NIPPLE 1" MPT	1
13	9640525	PUMP INTAKE TUBE 1.5 RVT 5.5" CUT	1
14	9601620-D	PUMP DISCHARGE TUBE 1.25 RVT 3.5" CUT	1
15	9600158	WORM GEAR CLAMP 2"	4



Accessory Kit Parts

ITEM	PART No.	DESCRIPTION	QTY
1	9641606	INSTRUCTION AND PARTS MANUAL	1
2	9660905	CONVERSION STRAP	1
3	9600425 9600423 9600819 9600421 1400462 9600781 9600436	Bolt 1/4-20 x 3/4 long Bolt 1/4-20 x 1/2 long Spacers S.S. 1/4 long Brass washers Nuts 1/4-20 with nylock Washers 1/4 S.S. Bolt 1/4-20 x 1 1/2 long	2 1 3 4 3 3 1
4	7020182	PICK-UP TUBE 18" X 1/4"	3
5	7028109	TUBING 1/4" O.D. CLEAR 20' LONG	1
6	9600721	TUBING 1/4" O.D. RED 20' LONG	2
7	9600722	TUBING 1/4" O.D. BLUE 20' LONG	1
8	9600431 0300121 NO PART No.	THUMB SCREW 5/16-18 CABLE TIES CONTROL BOX KEYS	3 6 2
9	1400462 9600423	Nuts 1/4-20 with nylock NOTE: (qty 8 may already be attached to stand. backwards and loose.) Bolt 1/4-20 x 1/2 long	16 16
10	9600215	SPRAY ARM ASSEMBLIES	2
11	9640806	STAND EXTENSION ASSEMBLY	4

DISCLAIMER

Knight LLC does not accept responsibility for the mishandling, misuse, or non-performance of the described items when used for purposes other than those specified in the instructions. For hazardous materials information consult label, MSDS, or Knight LLC. Knight products are not for use in potentially explosive environments. Any use of our equipment in such an environment is at the risk of the user, Knight does not accept any liability in such circumstances.

WARRANTY

All stainless steel components have a three year limited warranty from date of purchase against manufacturers defects. The electronic control board has a two year warranty. Warranty replacement for component parts purchased by Knight are limited to warranty by the manufacturer. Warranty applies only to the replacement or repair of such parts when returned to factory with a Knight Return Authorization (KRA) number, freight prepaid and found to be defective upon factory authorized inspection. Bearings and pump seals or rubber and synthetic rubber parts such as "O"-rings, diaphragms, squeeze tubing, and gaskets are considered expendable and are not covered under warranty. Warranty does not cover liability resulting from performance of this equipment nor the labor to replace this equipment. Product abuse or misuse voids warranty.

FOOTNOTE

The information and specifications included in this publication were in effect at the time of approval for printing. Knight LLC reserves the right, however, to discontinue or change specifications or design at any time without notice and without incurring any obligation whatsoever.

KNIGHT LLC (www.knightequip.com)

Knight Headquarters Tel: 949.595.4800 Fax: 949.595.4801	USA Toll Free Tel: 800.854.3764 Fax: 800.752.9518	Knight Canada Tel: 905.542.2333 Fax: 905.542.1536	Knight Europe Tel: 0044.1273.402780 Fax: 0044.1273.402781	Knight Australia Tel: 61.02.9352.1801 Fax: 61.02.9352.1899	Knight N. Asia Tel: 82.2.3481.6683 Fax: 82.2.3482.5742	Knight S. Asia Tel: 65.6763.6633 Fax: 65.6489.6723
--	--	--	--	---	---	---
