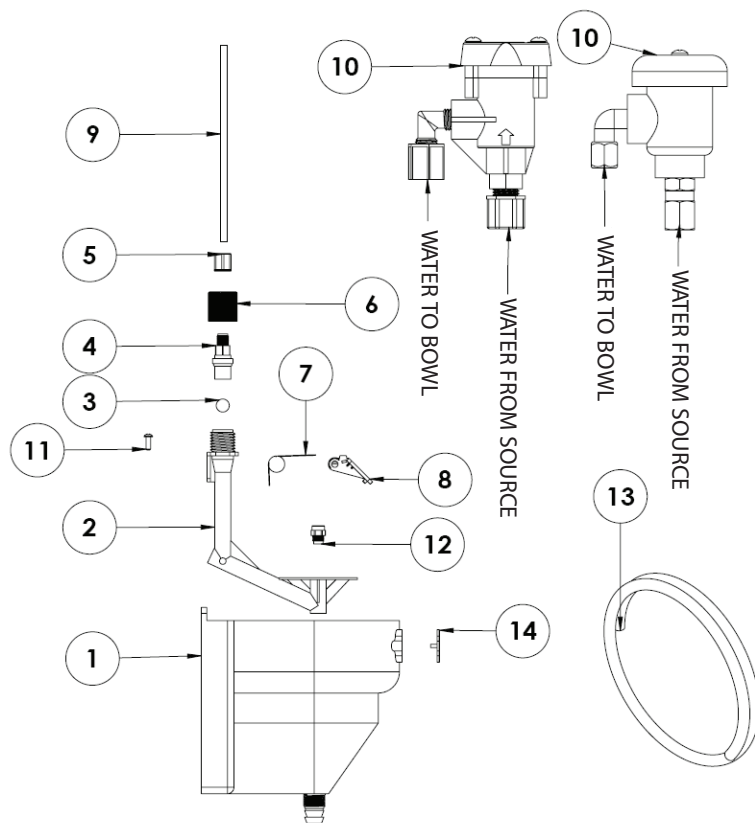


**VIKING BOWL PARTS LIST:**

- |                                     |                 |
|-------------------------------------|-----------------|
| 1. MOLDED GREY VIKING BOWL          | MOA VBBOWL M70  |
| 2. SPRAY ARM WITH BRASS PLUG        | VOA INTPLUG V80 |
| 3. STAINLESS STEEL BALL             | CHA VKBSSBL 000 |
| 4. MPT FITTING WITH O-RING          | VOA NY11MPT V81 |
| 5. 1/4" JACO NUT W/ RING & FERRULE  | CHA 1/4JACP 000 |
| 6. PLATED BRASS COLLAR              | CHA VBBRCOL 000 |
| 7. FLIPPER / PADDLE SPRING          | CHA SPRAYSP 000 |
| 8. SAFETY FLIPPER / PADDLE          | MOA VBFLPR M71  |
| 9. 7.5" STAINLESS STEEL TUBE        | CHA VKBWLTB 000 |
| 10. PLASTIC DEMA VACUUM BREAKER     | VOA VVBDEMA V19 |
| 10. WATTS CHROME 288AC VAC BRK      | VOA BRVBWFT V55 |
| 11. #8 X 1/2" HI/LOW SS SCREW       | CHA 8X1/2SS 000 |
| 12. STANDARD NOZZLE (PWD. & SOL)    | VOA STDNOZ V71  |
| 13. 5' LENGTH OF 5/8" X 7/8" TUBING | CBA 5#26TB 000  |
| 14. BLANK GREY FACEPLATE            | MOA VBFCPLT M73 |

**NOT PICTURED:**

- |                                                          |                 |
|----------------------------------------------------------|-----------------|
| PRIVATE LABEL LOGO FACEPLATE                             | MOA HOTSTAM N54 |
| COMPLETE SPRAY ARM (INTERNAL ASSEMBLY INCLUDES 2-8 + 12) | VOA VBINTAS V49 |
| POWDER NOZZLE (POWDER ONLY)                              | VOA POWDNOZ V73 |
| CONE NOZZLE (POWDER & SOLID)                             | VOA CONENOZ V70 |
| NDB NOZZLE (FOR LOW PRESSURE)                            | VOA NDBNOZ V72  |
| ELBOW (BULKHEAD) FITTING COMPLETE                        | VOA 77ELAS V41  |
| STANDARD HARDWARE BAG                                    | CHH VBHARDW 000 |
| POT AND PAN MECHANICAL TIMER                             | VOA POT/PAN V03 |
| BATTERY OPERATED TIMER VALVE                             | VOA POT/BAT V10 |
| VIKING BOWL PRO BALL VALVE OPERATED                      | VOA PROBOWL V10 |
| HANG UP NOZZLE (FOR BUCKET FILLING AND POT & PAN SINKS)  | VOA HANGNOZ V72 |
| MOLDED NUT FOR TOP MOUNTING                              | MOA 1/2PLAS M17 |
| RUBBER WASHER FOR TOP MOUNTING                           | CHA 78RBWS 000  |
| MOLDED WASHER FOR TOP MOUNTING                           | MOA 1-1/2PW M63 |
| MOLDED 77 DEGREE ELBOW ONLY                              | MOA 77ELB 000   |
| BULK BOWL TUBING (SOLD BY THE FOOT)                      | CBA #26 000     |



## VIKING BOWL INSTALLATION INSTRUCTIONS

Choose a location on the wall that will allow gravity feed of the chemical to the dish machine. You don't want to be more than 5' from the bottom of the Viking Bowl to the bulkhead fitting in the dish machine tank wall. The 5/8" I.D. clear PVC tubing from the Bowl should run down on the side of the dish machine, use 1/4-20 x 3/4" bolts.

- Use the compression nut (5) on the fitting on top of the Viking Bowl to secure the stainless steel tube to the Bowl. Attach the stainless steel tube to the ELBOW fitting in the side of the vacuum breaker.
- Mount the Viking Bowl using screws and anchors provided. Allow enough room above the bowl to insert and remove containers of product.
- Run and secure a 1/4" OD water line from the output side of your detergent control solenoid or timer valve to the straight fitting in the bottom of your vacuum breaker – this is the vacuum breaker inlet fitting. NOTE: Do NOT tap a hot water line AFTER a booster heater for a feed line to the solenoid and Bowl. The temperature of the water that will flow to the bowl must not exceed 140 degrees Fahrenheit.
- On the side of the dish machine tank, locate or make (with a Greenlee punch) a 7/8" hole for the 77-degree elbow above the water line. Try to dispense in an area with good water circulation. A good location is across from the inlet to the circulation pump. Avoid installing in the tank corners. Install the elbow assembly in this hole.
- Attach the clear feed tubing to the bottom of the Viking Bowl. Pull the other end of the tubing in line with the elbow and cut off any extra so the line doesn't sag. Attach it to the elbow.
- Power the detergent dispenser and check for leaks at all connections. Tighten any loose compression nuts. A small trickle of water from the spray nozzle is normal when the solenoid / timer valve is active and no product container is in place.

### SPECIFICATIONS & RECOMMENDED OPERATING CONDITIONS

Water Pressure: Minimum 15 PSI / Maximum 40 PSI Dynamic

If necessary, pressure can be adjusted by installing an in-line regulator to control the water pressure to the Viking Bowl.

Water Temperature: Some solid products are run with cold water. We do not recommend using water that is more than 140 degrees Fahrenheit.

**Notes:**

- The Viking Bowl accepts a standard 6" jug with a 100MM neck finish.
- Colored Viking Bowls are available – call for details.
- Private label logo is available on the Viking Bowl - call for details.
- Viking manufactures screen caps for encapsulated detergent - call for details.

**Nozzles:**

- The Viking Bowl comes with a Standard Spray Nozzle installed. The standard nozzle is used for both powder and solid products
- The Cone Nozzle provides the same spray pattern as the Standard Nozzle but it is cone shaped to shed water and product after feeding is complete.
- The Powder Nozzle provides a low flat spray and should be used with powdered products only.
- The NDB Nozzle is for locations where low water pressure is too low. It has a smaller orifice and will provide a better spray pattern at lower pressures. It will produce lower flow rates than any of the other nozzles.